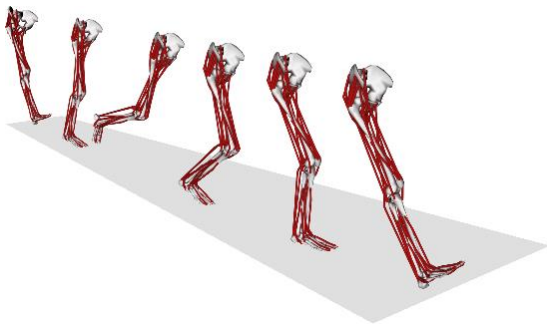


Patient focused experiments

- Functionals capacities (gait and balance)
- Experimentation in-vivo avec patients

Carrying out experiments

- Local suitable for receiving patients
- Anthropometric measurement and motion analysis tools
- Specific experimental setups
- Experiment outside of the lab



Expertise and analyzes

- Definition of clinical protocols
- Gait Analysis (NKQP003*)
- Measure of clinical parameters

Provision of resources

- Multidisciplinary team (biomechanic-clinician)
- Support for drafting requests to the Committee for the Protection of Persons
- Work spaces, test facilities, technical team



**Gait analysis is a clinical examination reimbursed by social security*

Functional capacities and gait analysis



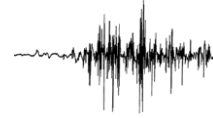
Instrumented treadmills
Treadmetrics®



Optoelectronics system
Motion Analysis
Optitrack
Qualysis



Force and pressure platforms
Bertec®
RsScan®



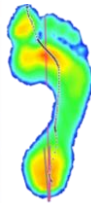
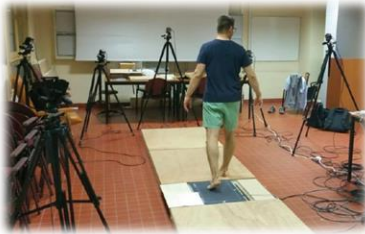
Wireless EMG
MegaElectronics®
ME6000



Knee KG

Transportable

Specific experimental setup



Foot dynamic
Orthopaedic department
CHU Lyon Sud



Knee kinematic
Orthopaedic department
Croix Rousse Hospital



Balance disturbance
CHU Lyon Sud

Development of clinical assessment tool



Pediatrics/Readaptation



Orthopaedic/Arthrosis



Geriatrics/Risk of falling

Contact :

LBMC UMR_T 9406
Univ.Eiffel-UCBL
25 Avenue François Mitterrand
69675 BRON France
lbmc.univ-gustave-eiffel.fr

Naïm Alexandre,
Responsable scientifique de la
plateforme
alexandre.naaim@univ-lyon1.fr