

50 m² (540ft²) dedicated to experiments with volunteers

- Measurements and Motion capture
- Anthropometry
- Biomechanic & Ergonomy evaluation (discomfort)

Experimental design & execution

- Rooms suitable for hosting volunteers
- Motion capture, anthropometry measurement tools
- Specific experimental setup



Expertise and analyzes

- Data processing tools
- Digital Human Models
- Expertise in measurement and ergonomic analysis



Resources

- Workspace, test facilities, technical team

For :

- Innovation evaluation
- Research for design criteria, optimal product for a population

Motion analysis and anthropometry



IMU
XSENS MTW

MOCAP
Pressure Map
VICON MX 14 caméras
Xsensor, Texusence

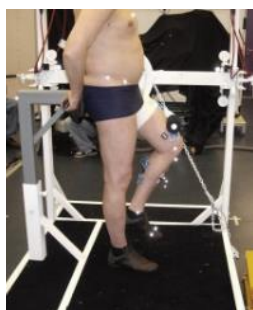
3D Body Scanner
SYMCAD ST

Wireless EMG
AURION 16 voies

Depth camera
PMD, Kinect, ...

3D Scanner
iReal, ...

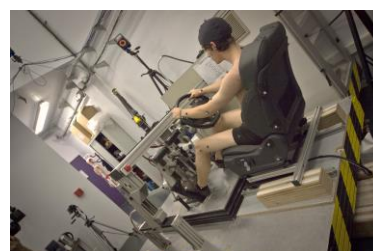
Custom made experimental setup



Ergometer



Experimental seat



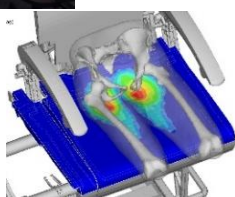
Cokpit mockup

Past experimentations samples

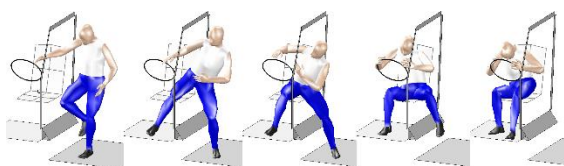
Seating comfort



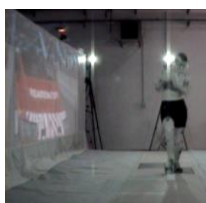
<https://www.youtube.com/watch?v=3YE3rCLUGw0>



Vehicle Ingress Egress



Pre-crash behavior



skin shape prediction



Contact :

LBMC UMR_T 9406
Univ.Eiffel-UCBL
25 Avenue François Mitterrand
69675 BRON France
<https://lbmc.univ-gustave-eiffel.fr/en>

Georges BEURIER,
PAMergo
scientific manager

georges.beurier@univ-eiffel.fr
Tel : +33 4 72 14 23 72

